

Prefabricated Pumping Stations



GRP/FRP Construction



An ISO 9001:2015, 14000:2015 & 45000:2018 Company



PACKAGED PUMP STATIONS

GSM-GPRS remote control I/O module, data logger

Water Engineering Services packaged pump stations are assembled at our UAE manufacturing facility, with our extensive and comprehensive product range coupled with over 30 years' experience in water and waste water industry.

MODELS AVAILABLE

WPS 900

WPS 250

WPS 3000

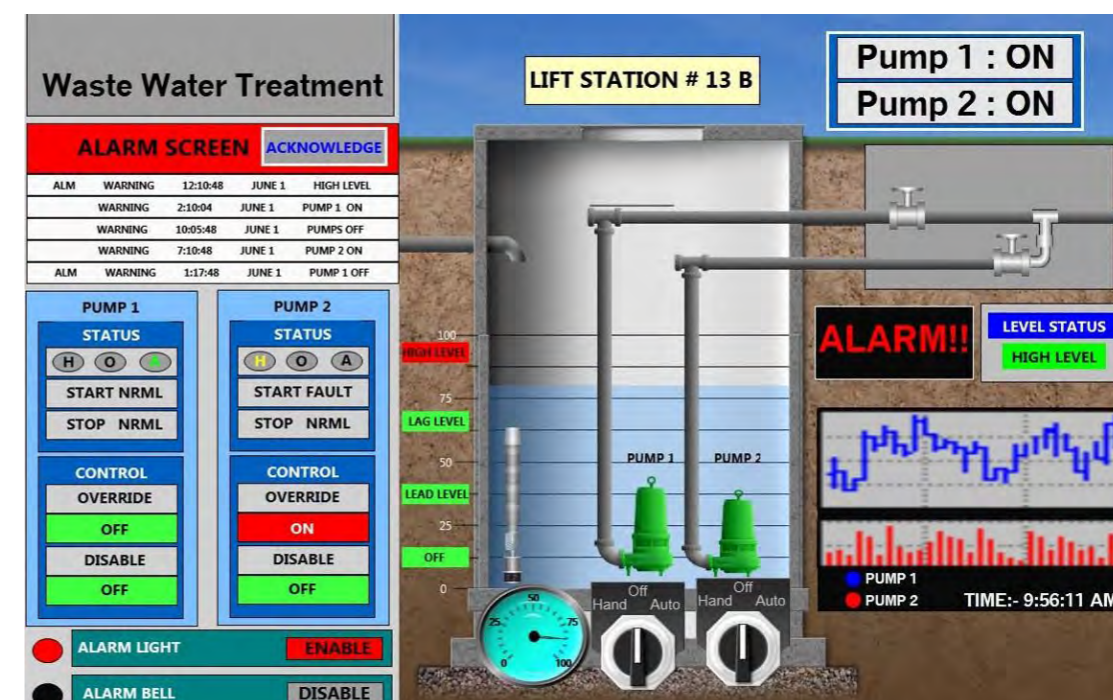
WPS1200

WPS 5000



With tank sizes ranging from 100L to 100,000L, in a range of materials including polyethylene & fibre glass. we have a "complete packaged pump solution" to meet your site specific specifications.

Available with a complete range of accessories that removes the complexity out of purchasing & installing a packaged pump station. Accessories include access cover options, guide rail or freestanding pump configurations, inlet and outlet tank connections, Electrical conduit connections, risers, dry valve pits, custom built control panels, lifting chains other specialized site specific requirements.



PACKAGED PUMP STATIONS

WPS 250



SPECIFICATION	
Model No.	WPS250
Depth	900mm
Outer Diameter	730mm
Inner Diameter	650mm
Nominal Litres	250
Approximate Weight	25kg
Access Cover	600mm x 600mm

CONSTRUCTION	
Polyethylene tank	
Inlet pipe to be installed by plumber	
All in-tank fittings incorporated in the packaged pump stations as follows:	
- PVC ball and non-return valves barrel unions. - PVC interconnecting pipe work.	

LIQUID HANDLED	
Raw sewage	Trade waste
Effluent	Stormwater

PUMP OPTIONS	CONFIGURATION
Single Pump	Freestanding

The WPS 250 litre pump station is a complete package including a pumpwell, access cover, submersible pump, pipework and valves. The options are endless with different pump controllers, alarms, pipework materials, access covers and an extensive range of submersible pumps for many different applications including: raw sewage, effluent, storm water, trade waste, condensate water, seepage water, surface water etc

WPS250 PUMP STATIONS

PART NO.	CAPACITY	TYPE	VOLTAGE	CONFIGURATION
WD90	250L	Drainage	240	Single/Freestanding
WC32	250L	Sewage Cutter	240	Single/Freestanding
WG04	250L	Sewage Grinder	240	Single/Freestanding
WV34	250L	Vortex	240	Single/Freestanding
W240	250L	Vortex	240	Single/Freestanding

* Please see submersible pump section for technical specifications

Control Panel Options

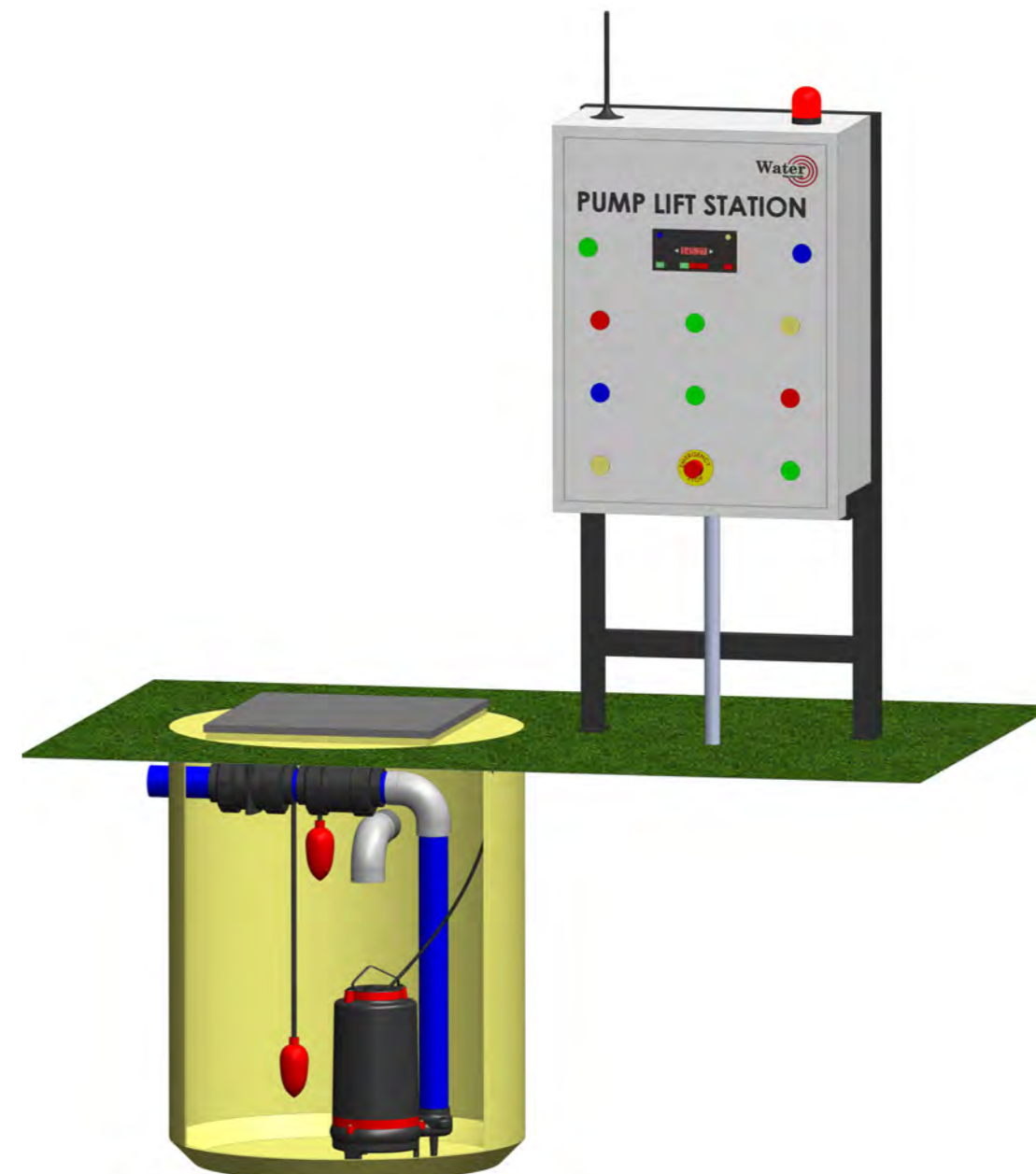
PART NO.	DESCRIPTION	VOLTAGE
190510	Single Economy Panel	240
190550	Single 240 Volt Panel 2.5 - 4 AMPS	240
190570	Single 240 Volt Panel 4 - 6 AMPS	240
190580	Single Pump 240 Volt Control Panel 7 - 10 AMPS	240
190600	Single 240 Volt Panel 9 - 13 AMPS	240
190610	Single 240 Volt Panel 12 - 18 AMPS	240

* Please see pump controller section for more details

Access Cover Options

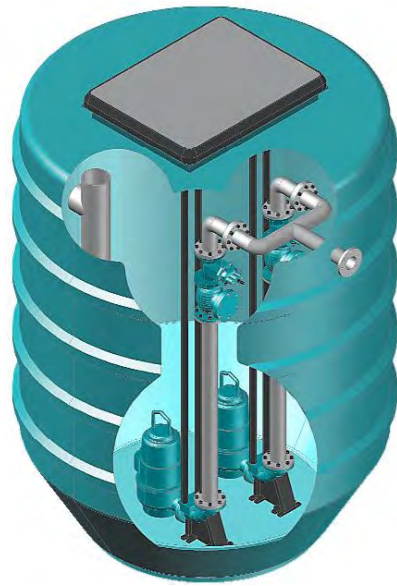
Pump station is supplied standard with light duty polyethylene cover

PART NO.	TYPE	CLASS	WEIGHT	CLEAR OPENING
190168	600 x 600 LD Cast Iron Solid Top	B	56	600 x 600
19180	600 x 600 HD Cast Iron Solids Top	D	115	600 x 600
190192	600 x 600 Class B Galvanised Grate	B	50	600 x 600



PACKAGED PUMP STATIONS

WPS 900



SPECIFICATION	
Model No.	WPS900
Depth	1200mm
Outer Diameter	1120mm
Inner Diameter	1000mm
Nominal Litres	900
Approximate Weight (Excluding Pump/s)	45kg
Access Cover	600mm x 600mm

CONSTRUCTION
Polyethylene tank
Inlet pipe to be installed by plumber
All in-tank fittings incorporated in the packaged pump stations as follows:
- PVC ball and non-return valves barrel unions.
- PVC interconnecting paperwork.

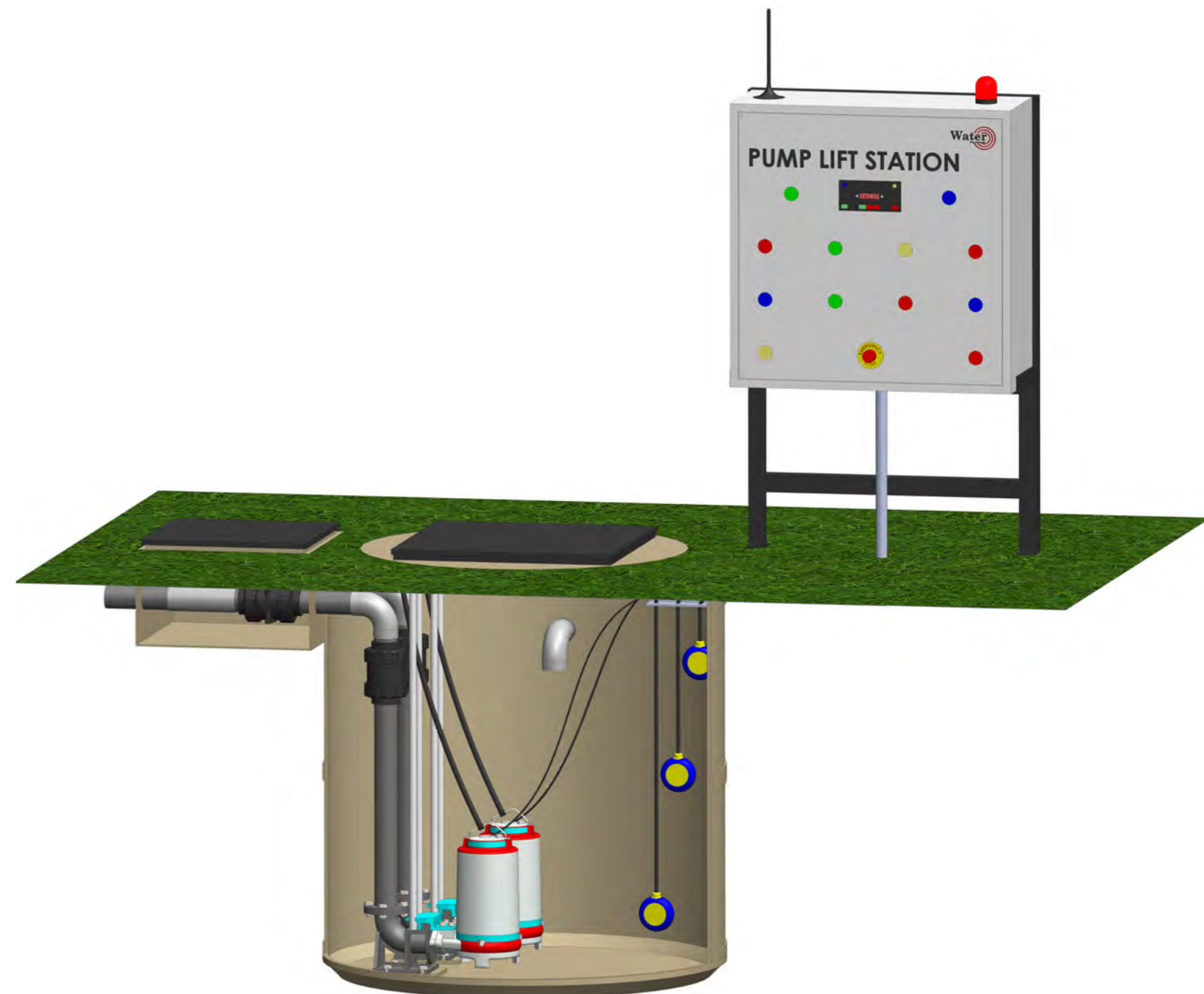
LIQUID HANDLED	
Raw sewage	Trade waste
Effluent	Stormwater

PUMP OPTIONS	CONFIGURATION
Single or Dual	Freestanding or Guide Rail

PART NO.	CAPACITY	TYPE	VOLTAGE	CONFIGURATION
190408	900	DRAINAGE	240	Single/Freestanding
192703	900	DRAINAGE	240	Dual/Freestanding
190480	900	SEWAGE CUTTER	240	Single/Freestanding
190468	900	SEWAGE CUTTER	240	Dual/Freestanding
190636	900	VORTEX	415	Dual/Guide Rail
190642	900	VORTEX	240	Single/Freestanding
192679	900	SEWAGE GRINDER	240	Dual/Guide Rail
192682	900	SEWAGE GRINDER	415	Dual/Guide Rail
192691	900	VORTEX	240	Dual/Guide Rail
192694	900	VORTEX	415	Dual/Guide Rail

The design, construction and appropriateness of design methodology of all FRP structures is verified and within the bounds of AS2634:1983, BS4994 The general construction of the station is as follows:

- ✓ Internal Corrosion Barrier Contact Moulded 0.5mm "C" Glass Veil Surface layer with Hetron 922 (or equivalent) Vinyl Ester Resin
- ✓ Internal Corrosion Barrier Backing Layers 2.5mm 'E' Glass Chop Strand tie layer with Hetron 922 (or equivalent) Vinyl Ester Resin
- ✓ Structural Laminate 'E' Glass reinforcement in chopped and continuous strands. Minimum glass content 50% (Thickness according to Design requirements)
- ✓ Structural Stiffeners Polyurethane Foam rib former overlaid with 'E' Glass reinforcement in chopped and continuous strands. Minimum glass content 50% (Size and Thickness according to Design requirements) External Surface – Final Surface 0.5mm "C" Glass Veil Surface layer with Hetron 922 (or equivalent) Vinyl Ester Resin
- ✓ External Surface – Sealer Pigmented ISO/NPG Flowcoat for external protection



PACKAGED PUMP STATIONS WPS1200



SPECIFICATION	
Model No.	WPS 1200
Depth	1600mm
Outer Diameter	1120mm
Inner Diameter	1000mm
Nominal Litres	1200
Approximate Weight	62kg
Access Cover	600mm x 600mm

CONSTRUCTION
Polyethylene tank
Inlet pipe to be installed by plumber
All in-tank fittings incorporated in the packaged pump stations as follows: - PVC ball and non-return valves barrel unions. - PVC interconnecting pipe work.

LIQUID HANDLED	
Raw sewage	Trade waste
Effluent	Stormwater

PUMP OPTIONS	CONFIGURATION
Single or Dual	Freestanding or Guide Rail

PART NO.	CAPACITY	TYPE	VOLTAGE	CONFIGURATION
190918	1200	DRAINAGE	240	Single/Freestanding
190930	1200	DRAINAGE	240	Dual/Freestanding
190930	1200	DRAINAGE	415	Single /Dual/Freestanding
190990	1200	SEWAGE CUTTER	240	Single/Freestanding
191020	1200	SEWAGE CUTTER	240	Dual/Freestanding
191158	1200	SEWAGE GRINDER	415	Single /Dual/Freestanding
191236	1200	VORTEX	240	Single/Freestanding
191248	1200	VORTEX	240	Dual/Freestanding
191260	1200	VORTEX	415	Dual/Freestanding

FIBREGLASS PUMP STATIONS AND WELLS DESIGNED FOR A RANGE OF APPLICATIONS

Our pump stations are designed to be versatile, enabling their use for many different types of requirement.

These include:

- Subdivisions – residential and industrial
- Caravan parks
- Mining sites
- Shopping centres
- Hospitals

OUR PUMPING STATIONS HAVE A RANGE OF FEATURES TO ENHANCE THEIR USABILITY AND FLEXIBILITY

Designed to reduce site work and installation time: comes fully fitted with factory-assembled pumps and pipework

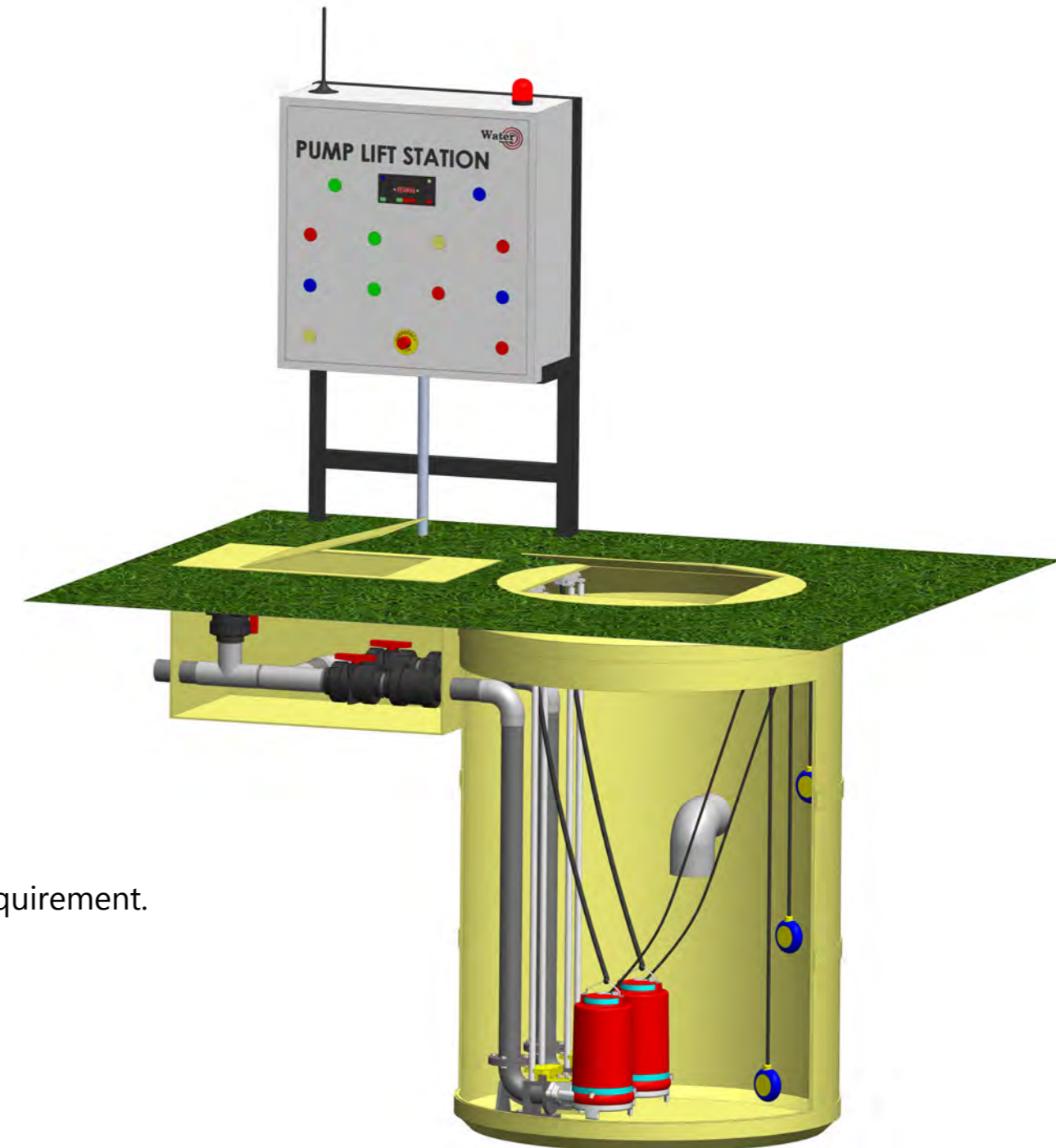
Built to comply with the highest OHS (Occupational Health and Safety) and standards

Comes with a wide range of accessories that enhance performance

Made of lightweight yet corrosion-resistant material for superior strength.

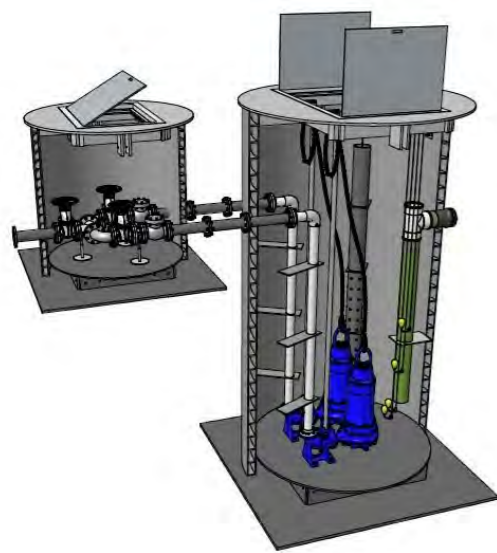
Customizable parts with a pump station that comes in a variety of sizes, from 600mm to 2,400mm in diameter.

We also offer many options for the type of material used for access covers.



PACKAGED PUMP STATIONS

WPS3000



SPECIFICATION	
Model No.	WPS 3000
Depth	2125mm
Outer Diameter	1730mm
Inner Diameter	1600mm
Nominal Litres	3000mm
Approximate Weight (Excluding Pump/s)	165kg
Access Cover	600 x 900mm

CONSTRUCTION
Polyethylene tank
Inlet pipe to be installed by plumber
All in-tank fittings incorporated in the packaged pump stations as follows:
- PVC ball and non-return valves barrel unions.
- PVC interconnecting paperwork.

LIQUID HANDLED	
Raw sewage	Trade waste
Effluent	Stormwater

PUMP OPTIONS	CONFIGURATION
Single, Dual or Triplex	Freestanding or Guide Rail

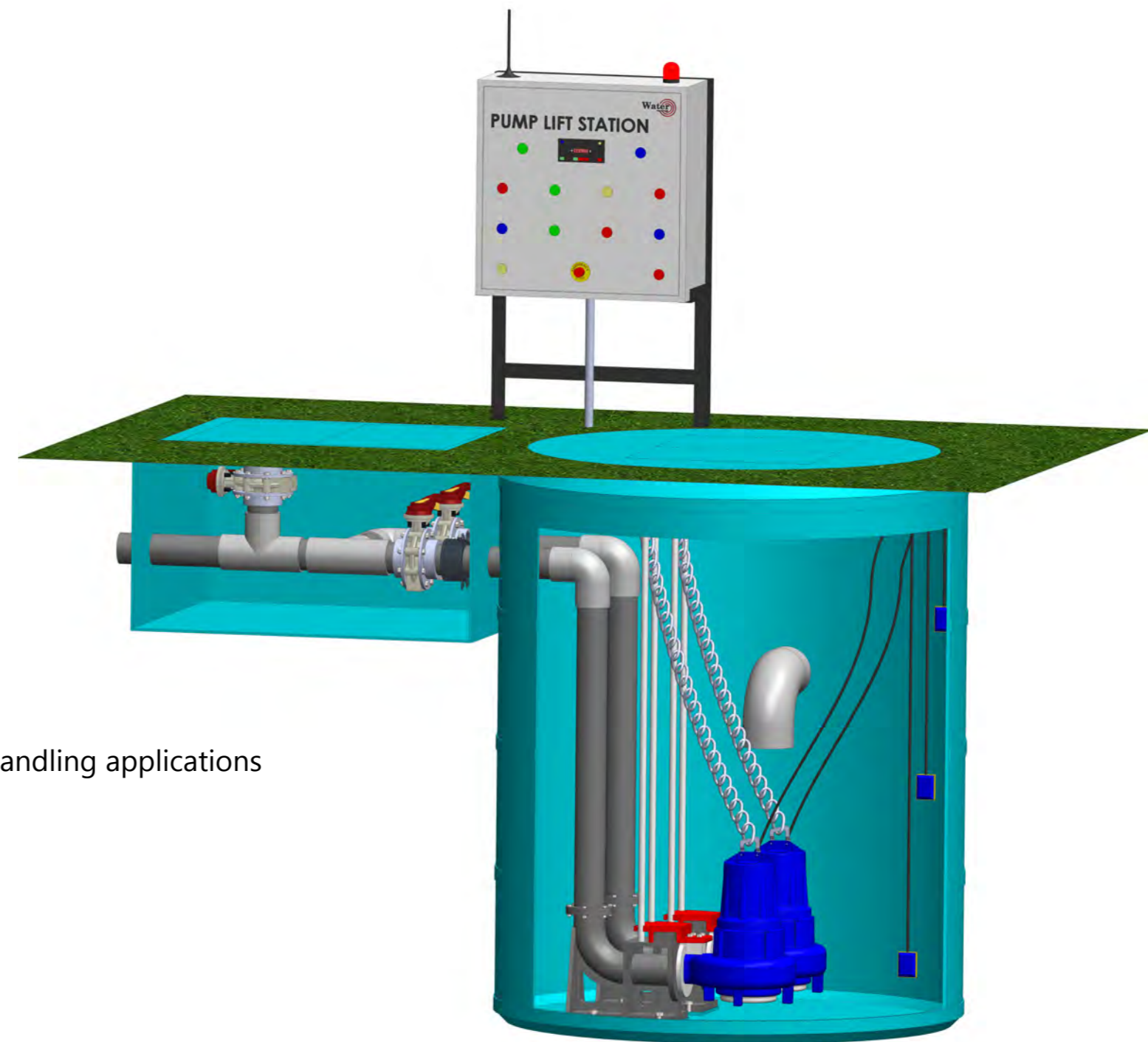
PART NO.	CAPACITY	TYPE	VOLTAGE	CONFIGURATION
191260	3000	DRAINAGE	240	Single/Freestanding
191626	3000	DRAINAGE	240	Dual/Freestanding
191656	3000	DRAINAGE	415	Dual/Freestanding
191854	3000	SEWAGE GRINDER	415	Dual/Freestanding
192739	3000	VORTEX	415	Dual/Freestanding

Specifications

- Simplex (one pump), duplex (two pumps), or triplex (three pumps) configuration
- Non-Hazardous applications with temperatures up to 1800 F
- 316 stainless steel corrosion resistant sump pumps with vortex impellers for solids handling applications
- Level switch assembly or level transmitter for pump ON/OFF control
- Side or top inlet connections
- Remote Control Panel
- Factory-assembled and tested before shipment

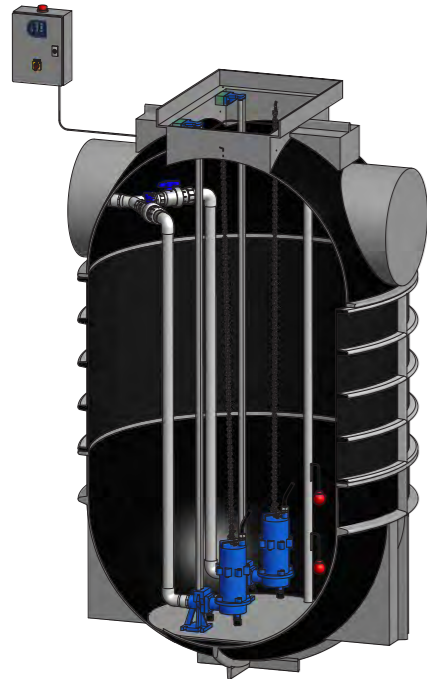
Standard Features

- Cylindrical fiberglass basin with lifting lugs for installation and anti-floatation flange
- Ortho Polyester resin or Vinyl Ester liner for added corrosion resistance
- Slip-resistant aluminum cover rated for pedestrian traffic with access hatches
- Submersible 316 stainless steel sump pump with guide rail, dual Viton mechanical seals, 33 ft PVC jacketed cable, and built-in overload/thermal protection
- Check and isolation valves on the discharge of each pump to prevent backflows and facilitate maintenance
- PVC, CPVC, or stainless steel piping and fittings
- Lockable disconnect for each pump to allow maintenance on one pump while the others are still in service
- NEMA 4 junction box to connect to remote UL-Listed control panel



PACKAGED PUMP STATIONS

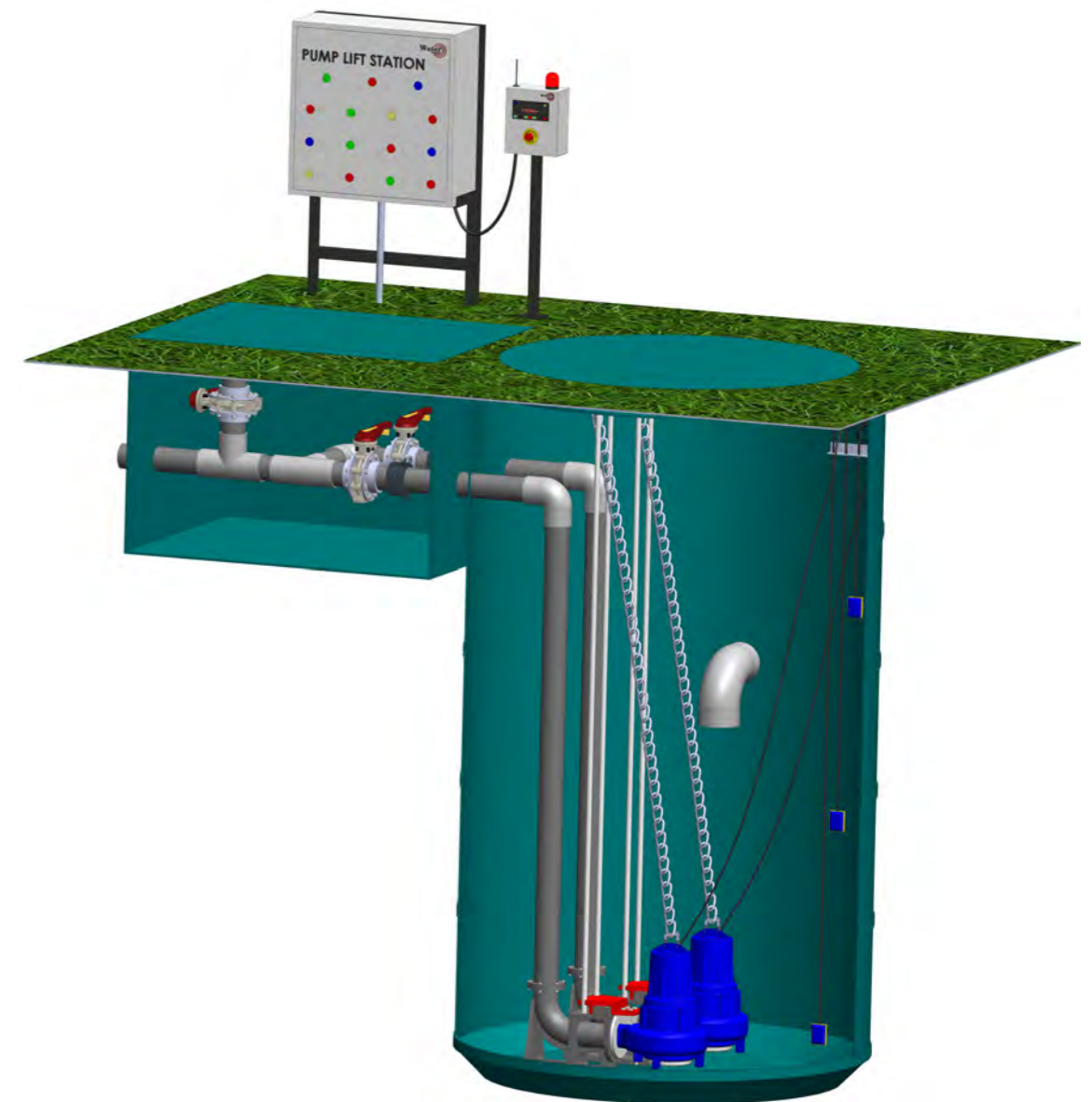
WPS5000



SPECIFICATION	
Model No.	KPPS5000
Depth	3300mm
Outer Diameter	1900mm
Inner Diameter	1800mm
Nominal Liters	5000
Approximate Weight	550kg
Access Cover	600 x 900mm

CONSTRUCTION	LIQUID HANDLED
Polyethylene tank	Raw sewage Trade waste
Inlet pipe to be installed by plumber	Effluent Stormwater
All in-tank fittings incorporated in the packaged pump stations as follows:	
- PVC ball and non-return valves barrel unions.	
- PVC interconnecting paperwork.	

PUMP OPTIONS	CONFIGURATION
Single, Dual or Triplex	Freestanding or Guide Rail



PART NO.	CAPACITY	TYPE	VOLTAGE	CONFIGURATION
192793	5000	SEWAGE GRINDER	240	single/freestanding
192304	5000	SEWAGE GRINDER	240	dual/freestanding
192796	5000	SEWAGE GRINDER	240/415	dual/freestanding
192292	5000	SEWAGE CUTTER	240/415	single/freestanding
192286	5000	DRAINAGE	240/415	dual/freestanding
192820	5000	VORTEX	240/415	dual/freestanding
192823	5000	VORTEX	240/415	dual/guide rail

OUR PUMPING STATIONS HAVE A RANGE OF FEATURES TO ENHANCE THEIR USABILITY AND FLEXIBILITY

Designed to reduce site work and installation time: comes fully fitted with factory-assembled pumps and pipework Controls are selected to meet your site requirements

Built to comply with the highest OHS (Occupational Health and Safety) and standards

Comes with a wide range of accessories that enhance performance

Made of lightweight yet corrosion-resistant material for superior strength.

Customizable parts with a pump station that comes in a variety of sizes.

We also offer many options for the type of material used for access covers.



- ✓ Dry valve pits
- ✓ "Non" standard dimensions
- ✓ Water charged ground
- ✓ Above ground installation
- ✓ Corrosion resistant
- ✓ Horizontal or vertical configuration

Our other Products



Reverse Osmosis System



Sewage Treatment Plant



Chemical Injection Skid



Gas Chlorination System



Swimming pool disinfection



Odour Control Systems



Chlorine Gas Scrubber



Sewage Treatment Plant



Water Treatment Chemicals

Contact:

Middle East Office

P.O Box - 8872

Works Q4 -115

SAIF Zone - Sharjah - U.A.E

Ph : +971 6 5529840

Fax : +971 6 5529841

E-Mail : info@waterengrs.com

Web : www.waterengrs.com



info@waterengrs.com

www.waterengrs.com