



Griffco Valve Inc.

6010 N. Bailey Ave. Suite. 1B

Amherst, NY 14226

PH: 716 835-0891

FAX: 716 835-0893

HIGH FLOW SERIES PRESSURE RELIEF VALVES

Features:

- High Reliability / Low Cost
- Large Orifice for High Viscosity Fluids
- Higher Flow / Lower Pressure Drop
- Adjustable 10 - 150 PSI
- Ventable to Suction Line
- 2 Port Design
- Vulcanised PTFE/EPDM Diaphragm
- Wide Range of Materials

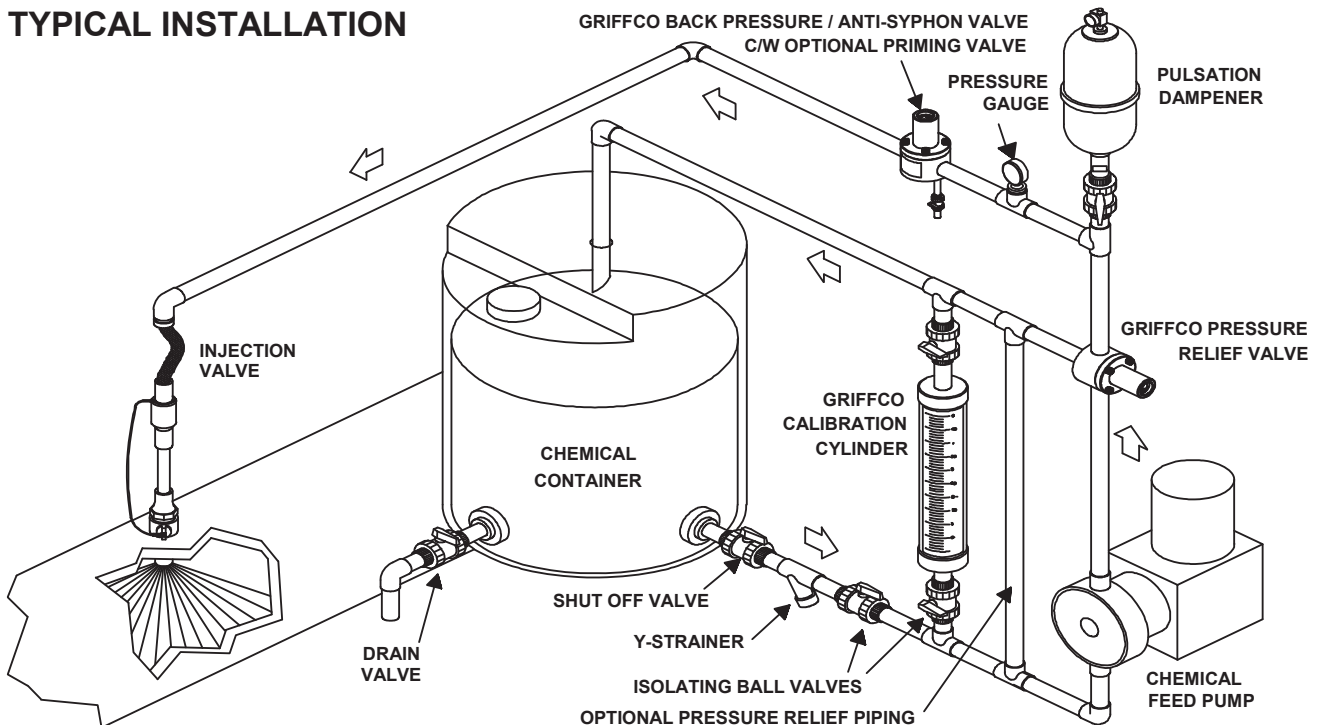
Operation:

Griffco diaphragm pressure relief valves operate when the pressure in a chemical line exceeds the pre-set pressure of the valve. The diaphragm is held against the valve seat by an internal spring. When the pre-set pressure is exceeded the diaphragm is forced up and the chemical flows out the relief port, back to the chemical tank or to the suction side of the pump. The valves are pre-set at 50 psi, however they are field adjustable from 10 - 150 psi via the adjustment screw. The relief valve should be set approximately 15 psi higher than the system pressure. Installation should be made as close to the pump as possible, without any valves or accessories between the relief valve and the pump. Consult your pump manufacturer for his recommendations.



Griffco high flow diaphragm pressure relief valves are designed to protect chemical transfer systems from over pressure damage caused by defective equipment or a blockage in the chemical line. Large orifice sizes facilitate high flows and high viscosity. Wetted materials include **PVC, CPVC, PP, PVDF, PTFE, 316SS, A20 and Hast. C.** Available sizes: 1/2", 3/4, and 1".

TYPICAL INSTALLATION



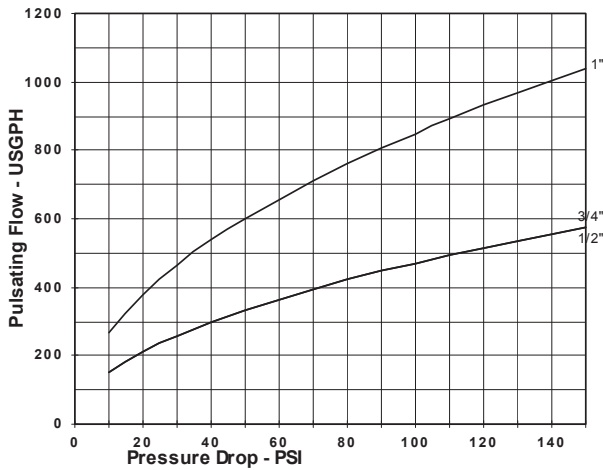
CALL 1 - 800 - GRIFFCO

Bulletin # PRHF1005-2008R2

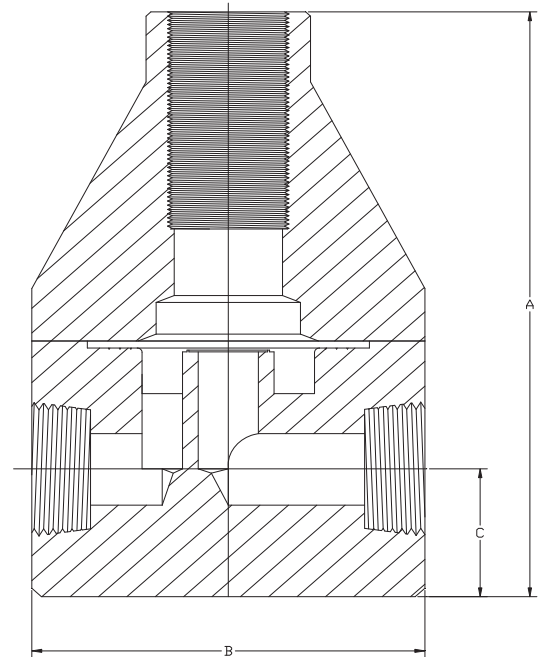
Technical Data:

Sizes: Model PRHF			1/2", 3/4", 1"		
Connections:			NPT, Socket, Union, & Flange		
Pressure Adjustment			Standard: 10 - 150 psi, Optional: 0 - 50 psi, 10 - 250 psi		
Flow Rates @ 150 psi			Shipping Weight: lbs		
Size	Pulsating	Continuous	Plastic	Metal / Plastic Top	Metal / Metal Top
1/2"	600 USgph	30 USgpm	3.5	6.0	7.0
3/4"	600 USgph	30 USgpm	3.5	6.0	7.0
1"	1000 USgph	54 USgpm	7.0	14.0	23.0
Max Temperature: (°F)			PVC, PP: 140°; CPVC: 190°; PTFE, PVDF & Metal: 300°, (Peak 390°)		
Materials of Construction:					
Diaphragm			PTFE / EPDM, Optional: Viton & PTFE / Viton		
Valve Top			Standard: Noryl Optional: 316 SS		
Valve Body			PVC, CPVC, PP, PTFE, PVDF, 316 SS, A 20, Hast. C, Others on Request		

Performance Curves



Dimensions:



Product Codes For Ordering:

PRHF

1 2 3 4

1 = Size **2 = Material** **3 = Spring Opt** **4 = Options**

050 - 1/2" P - PVC 1 - 0 - 50 psi V - Viton Diaphragm
075 - 3/4" CP - CPVC 2 - 10 - 250 psi S - Socket Connection
100 - 1" PP - Polypro F - Flange Connection
 T - PTFE U - Union Connection
 K - PVDF B - BSP Connections
 H - Halar OSS - 316 SS Top
 S - 316 SS AR - Priming Valve
 A - Alloy 20
 C - Hastalloy C

DIMENSIONS: PRHF-SERIES

All Materials

Size	A (in)	B (in)	C (in)
1/2"	5.560	3.500	1.125
3/4"	5.560	3.500	1.125
1"	7.250	4.900	1.250