



Griffco Valve Inc.

6010 N. Bailey Ave. Suite. 1B

Amherst, NY 14226

PH: 716 835-0891

FAX: 716 835-0893

G-SERIES BACK PRESSURE VALVES



Griffco G-Series diaphragm back pressure valves are designed to enhance the performance of chemical feed systems by applying a continuous back pressure to the chemical feed pump, while also acting as an anti-syphon valve. Robust construction ensures reliability in the rigorous service of municipal and industrial applications. Wetted materials include: **PVC, CPVC, PP, PVDF, PTFE, Halar, 316 SS, A20 and Hast. C.** Available sizes: 1/2" - 4".

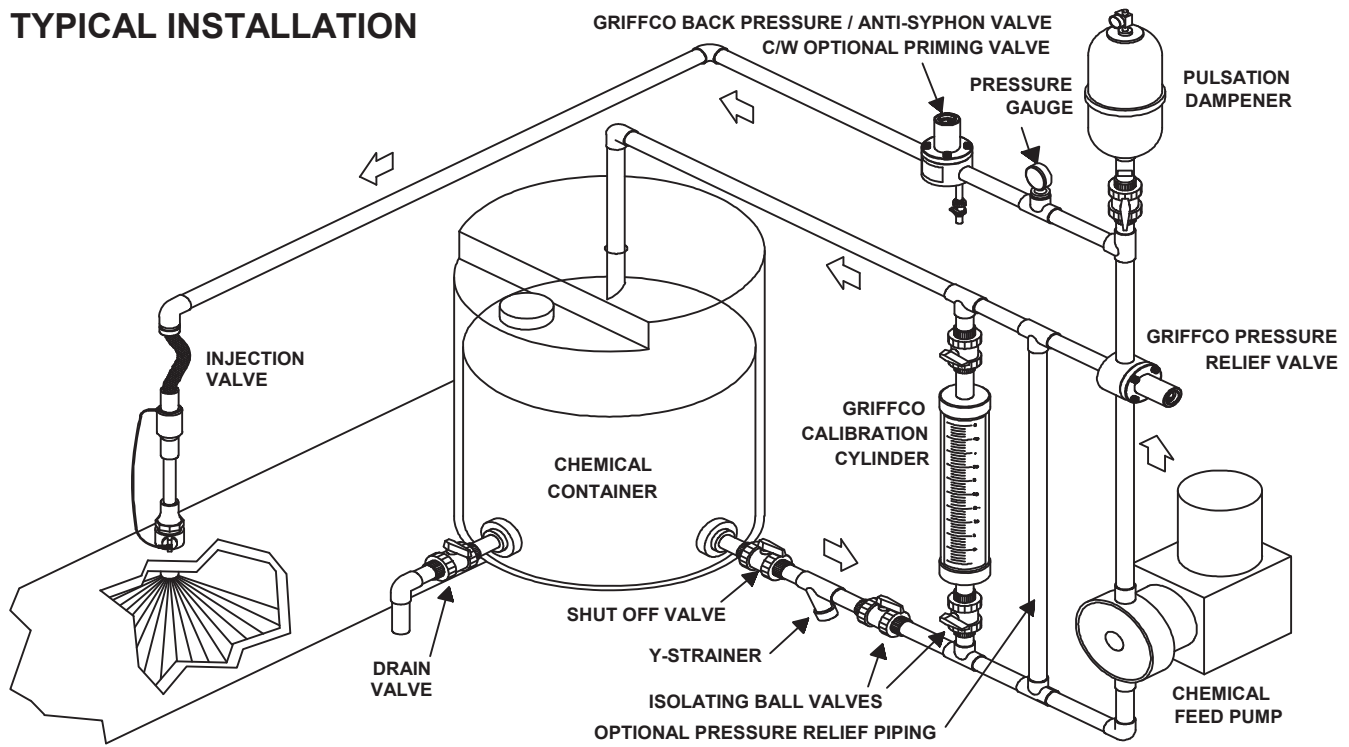
Features:

- **NEW Molded Noryl Top**
- **High Reliability / Low Cost**
- **Molded PTFE/EPDM Diaphragm**
- **Adjustable 10 - 150 PSI**
- **Optional PSI Rated Valves**
- **Anti-Syphon Function**
- **Robust, Machined Construction**
- **Tamper Resistant Adjustment Screw**
- **Wide Range of Materials**

Operation:

Griffco diaphragm back pressure valves apply positive discharge pressure to a metering pump system to prevent siphoning and eliminate varying dosage rates caused by fluctuating downstream pressure. The diaphragm is held against the valve seat by an internal spring. When the preset pressure is exceeded, the diaphragm is forced up and chemical flows through the valve to the injection point. The valves are preset for 50 psi, however they are field adjustable from 10 - 150 psi via the adjustment screw. Installation should be as close to the injection point as possible to prevent chemical line drainage, and it is most important that all chemical system equipment such as pulsation dampeners and pressure gauges are between the pump and back pressure valve.

TYPICAL INSTALLATION



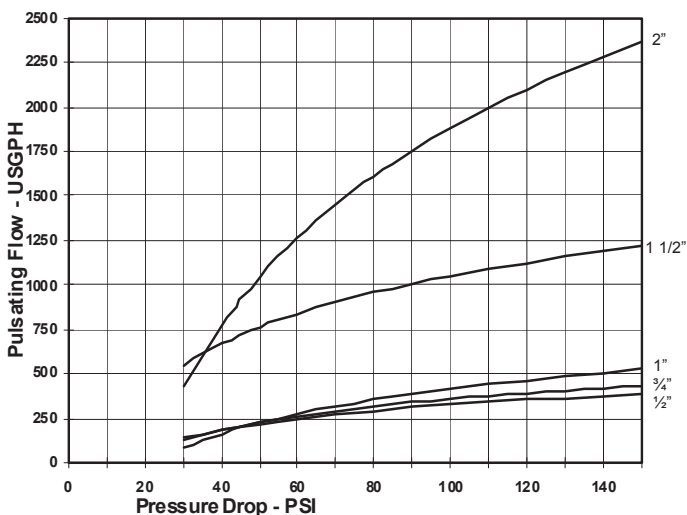
CALL 1 - 800 - GRIFFCO

Bulletin # BPG1003-2010R1

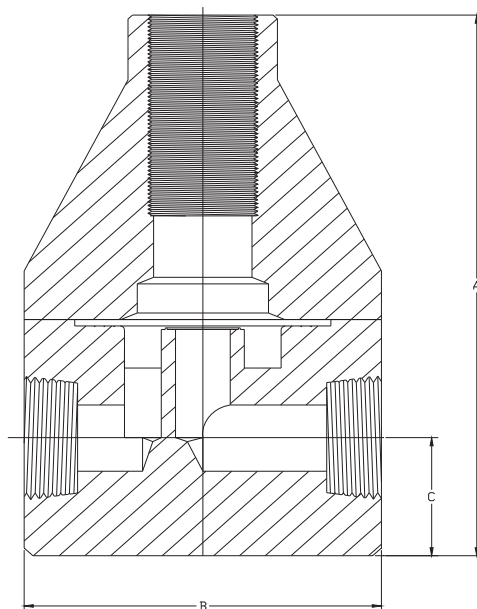
Technical Data:

Model BPG Sizes:			1/2", 3/4", 1", 1 1/2", 2", 3", 4"		
Connections:			NPT, Socket, Union, Flange		
Pressure Adjustment			Standard: 10 - 150 psi; Optional: 0 - 50 psi, 10 - 250 psi, 50 - 350 psi *Note: Size 1 1/2" and Larger BPG valves 10 - 250 psi Max range ONLY.		
Flow Rates @ 150 psi			Shipping Weight: lbs		
Size	Pulsating	Continuous	Plastic	Metal / Plastic Top	Metal / Metal Top
1/2"	300 USgph	21 USgpm	3.0	5.5	6.5
3/4"	300 USgph	21 USgpm	3.0	5.5	6.5
1"	500 USgph	26 USgpm	3.5	6.0	7.0
1 1/2"	1200 USgph	63 USgpm	9.0	18.5	26.0
2"	2350 USgph	120 USgpm	9.0	20.0	30.0
3"	5200 USgph	270 USgpm	28.0		
4"	5200 USgph	270 USgpm	30.0		
Max Temperature: (°F)			PVC: 140° ; CPVC & PP: 195°; PTFE, PVDF & Metal: 300°, (Peak 390°)		
Max Operating Pressure(psi) @ 70 Deg. F			Plastic/Noryl: 375 psi		Metal/Metal: 2000 psi
Materials of Construction:					
Diaphragm			PTFE / EPDM, Optional: Viton, Hypalon, & PTFE / Viton		
Valve Top			Standard: 1/2" - 2" Noryl 3" & 4" PVC Optional: 316 SS		
Valve Body			PVC, CPVC, PP, PTFE, PVDF, Halar, 316 SS, A 20, Hast. C		

Performance Curves: (3" & 4" on request)



Dimensions:



Product Codes For Ordering Back Pressure Valves:

BPG
 1 2 3 4

1 = Size 2 = Material 3 = Spring Opt 4 = Options

050 - 1/2"	P - PVC	1 - 0 - 50 psi	V - Viton Diaphragm
075 - 3/4"	CP - CPVC	2 - 10 - 250 psi	S - Socket Connection
100 - 1"	PP - Polypro		F - Flange Connection
155 - 1 1/2"	T - PTFE		U - Union Connection
200 - 2"	K - PVDF		B - BSP Connections
300 - 3"	H - Halar		OSS - 316 SS Top
400 - 4"	S - 316 SS		MSS - 50 - 350 psi
	A - Alloy 20		AR - Priming Valve
	C - Hastalloy C		90 - 90° Configuration

DIMENSIONS: BPG-SERIES			
All Materials			
Size	A (in)	B (in)	C (in)
1/2"	5.560	3.500	1.125
3/4"	5.560	3.500	1.125
1"	5.860	3.500	1.250
1 1/2"	8.350	4.900	1.825
2"	8.900	4.900	2.150

Note: Option MSS is only for use on 316SS, A20, & Hast C. Valves.

Email: sales@griffcovalve.com

Website: www.griffcovalve.com