

ELECTRIC AGITATOR

AC or 3-phase current motors are connected directly to the agitator shaft. A 3-phase current motor 230/380V, IP55, ISO Cl is supplied as standard the version. In the case of AC operation, the 3-phase current motor is equipped with an operating capacitor.

Mixing equipment

The agitators are fitted with a three-blade PVDF or stainless steel impeller which is connected to the shaft. Thus the fixed sense of rotation is also to the right, if looked at the motor fan, in order to avoid the propeller to be detached. The pitch of the propeller blades is left-handed so that the media to be mixed is delivered towards the bottom.

Agitator shaft

The agitator shafts are mounted directly on the motor shaft. They are available in stainless steel, stainless steel with PVDF coating or stainless steel with PE coating. Standard lengths according to the following tables are recommended, other lengths can be supplied upon request. The length should be determined so that the distance of the mixing equipment from the tank bottom equals the diameter of the agitator.

Effervescent and aggressive media

Escaping gases and splashes may damage the motor of the standard version. Therefore the agitator shaft should be equipped with a protective PP sheet with O-ring sealing, if necessary. It can be supplied optional.

Accessories

- intermediate flange with V-ring as protection against escaping gases (for 0.05-0.12 kW agitators, other sizes upon request).

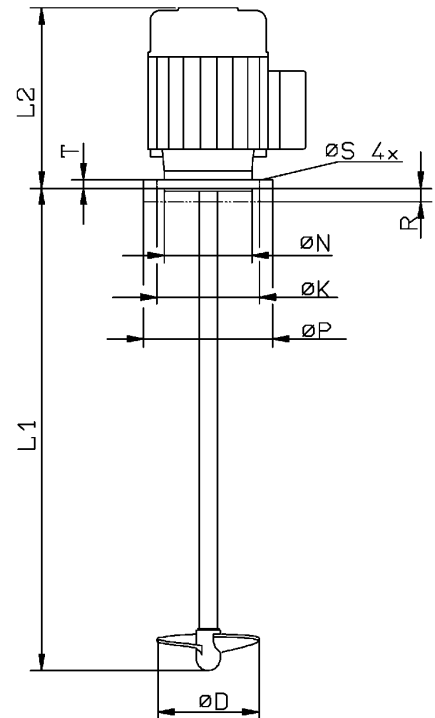
Technical data

Type	Nominal power [kW]	Nominal speed [1/min]	Tank size	Propeller diameter [mm]
W-TP09	0.12	1380	up to 300 l	100
W-TP012	0.12	1380	up to 500 l *	100
W-TP018	0.18	1380	from 500 l *	100
W-TP025	0.25	1380	from 500 l *	100
W-TP037	0.37	1380	up to 1000 l	125
W-TP075	0.75	1380	up to 3000 l	150

* Pls. specify the precise tank dimensions to select the shaft length.

Dimension table [dimensions in mm]

Motor size	Flange-Ø P	Ø K	Ø N	R	T	Ø S	Ø D	L1	L2
0.09/0.12 kW	140	115	95	15	9	4 x 0 9.5	100	refer to Shaft Length Table below	195
0.18/0.25 kW	160	130	110	-	9	4 x 0 9.5	100		380
0.37 kW	160	130	110	-	9	4 x 0 9.5	125		201
0.75 kW	200	165	130	-	10	4 x 0 11.5	150		232



Middle East Office:

Works Q4-115, P.O Box 8872
SAIF Zone - Sharjah - U.A.E.
Ph : +971 6 5529840
Fax : +971 6 5529840
Mail: Info@waterengrs.com
Web: www.waterengrs.com

**SUSTAINABLE
WATER SOLUTIONS**

Installation precautions

It may be useful to provide flow breakers in the tank. The agitator must not be installed concentrically in the tank in order to minimize funnel formation. Suction lines must be rigid. Flexible lines would wind around the agitator shaft. To make sure that metering is not affected the funnel produced during agitation does not allow air to enter into suction line. Therefore the suction line must be installed with the largest possible distance to the agitator. It can be useful to install the flow breaker in front of the suction line so that the funnel flow has no effect.

Selection table

Motor Rating	Shaft length	Shaft-material	Propeller	Model No	Power
0.12KW	500	Stainless steel(SS 316) SS316-PVDF Coated	Stainless Steel /PVDF PVDF	W-S512S W-S512V	220V/ 1ph /50/60Hz
0.12kw	700	Stainless steel (SS 316) SS316-PVDF Coated	Stainless steel/PVDF PVDF	W-S712S W-S712V	220V/ 1ph /50/60Hz
0.12kw	800	Stainless steel (SS 316) SS316-PVDF-coated	Stainless steel/PVDF PVDF	W-S812S W-S812V	220V/ 1ph /50/60Hz
0.12kw	900	Stainless steel (SS 316) SS316-PVDF-coated	Stainless steel/PVDF PVDF	W-S912S W-S912V	220V/ 1ph /50/60Hz
0.37kw	1000	Stainless steel (SS 316) SS316-PVDF-coated	Stainless steel/PVDF PVDF	W-S137S W-S137V	220V/ 1ph /50/60Hz
0.12kw	500	Stainless steel (SS 316) SS316-PVDF-coated	Stainless steel/PVDF PVDF	W-T512S W-T512V	380V/ 3ph /50/60Hz
0.12kw	700	Stainless steel (SS 316) SS316-PVDF-coated	Stainless steel/PVDF PVDF	W-T712S W-T712V	380V/3ph/50/60Hz
0.12kw	800	Stainless steel (SS 316) SS316-PVDF-coated	Stainless steel/PVDF PVDF	W-T812S W-T812V	380V/ 3ph /50/60Hz
0.12kw	900	Stainless steel (SS 316) SS316-PVDF-coated	Stainless steel/PVDF PVDF	W-T912S W-T912V	380V/ 3ph /50/60Hz
0.37kw	1000	Stainless steel (SS 316) SS316-PVDF-coated	Stainless steel/PVDF PVDF	W-T137S W-T137V	380V/ 3ph /50/60Hz
0.75kw	1000	Stainless steel (SS 316) SS316-PVDF-coated	Stainless steel/PVDF PVDF	W-T175S W-T175V	380V/ 3ph /50/60Hz

Note: for other voltage pls. consult factory

Middle East Office:

Works Q4-115, P.O Box8872
SAIF Zone - Sharjah - U.A.E.
Ph:+971 6 5529840
Fax:+971 6 5529840
Mail:Info@waterengrs.com
Web: www.waterengrs.com

**SUSTAINABLE
WATER SOLUTIONS**